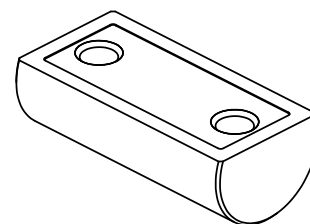
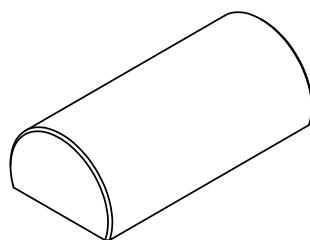
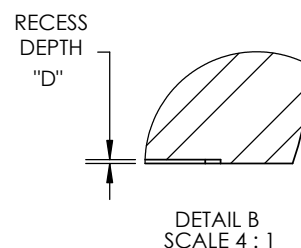
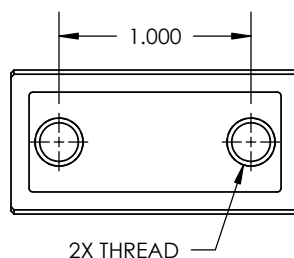
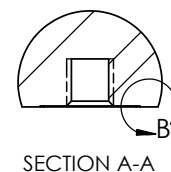
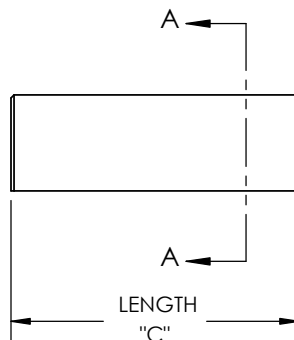
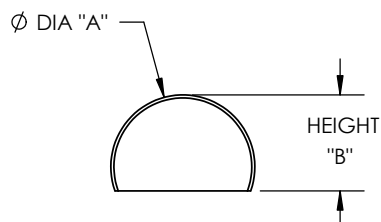



MATERIAL: STAINLESS STEEL 440C, HARDENED TO Rc 58 MIN

REV	ECO NO.	ECO TITLE	DATE
---	-----	-----	--/--/--



PART NUMBER	DIAMETER "A"	HEIGHT "B"	LENGTH "C"	RECESS DEPTH "D"	THREAD	MIN THREAD DEPTH
250-TCR-T	0.250 ± .0001	0.167 ± .002	1.500	0.005	#6-32	0.125
312-TCR-T	0.3125 ± .0001	0.208 ± .002	1.500	0.005	#6-32	0.154
375-TCR-T	0.375 ± .0001	0.250 ± .002	1.500	0.005	#10-32	0.200
500-TCR-T	0.500 ± .0001	0.334 ± .002	1.500	0.005	1/4-20	0.250
750-TCR-T	0.750 ± .0001	0.500 ± .002	1.500	0.005	1/4-20	0.250
100-TCR-T	1.000 ± .0001	0.750 ± .002	1.500	0.005	1/4-20	0.250

<div>PROPRIETARY INFORMATION</div> <div>THE INFORMATION CONTAINED IN THIS DRAWING IS THE SOLE PROPERTY OF MICRO SURFACE ENGR. INC. AND IS FURNISHED FOR INFORMATIONAL PURPOSES ONLY.</div> <div>© 2006 MICRO SURFACE ENGR. INC.</div>	UNLESS OTHERWISE SPECIFIED:		<div>Bal-tec<sup>TM</sup></div> <div>1550 E. SLAUSON AVE</div> <div>LOS ANGELES, CA 90011</div>						
	DIMENSIONS ARE IN INCHES		TITLE		NUMBER			REV	
	TOLERANCES: ANGULAR: 1° TWO PLACE DECIMAL ±.01 THREE PLACE DECIMAL ±.005	TRUNCATED & THREADED CYLINDER		SEE TABLE			01		
	INTERPRET GEOMETRIC TOLERANCING PER: ANSI Y14.5	ENGINEER	DWN BY	DATE DRAWN	SIZE	SCALE	PAGE		
		GENE GLEASON	RJV	12/02/06	A	1:1	1 OF 1		