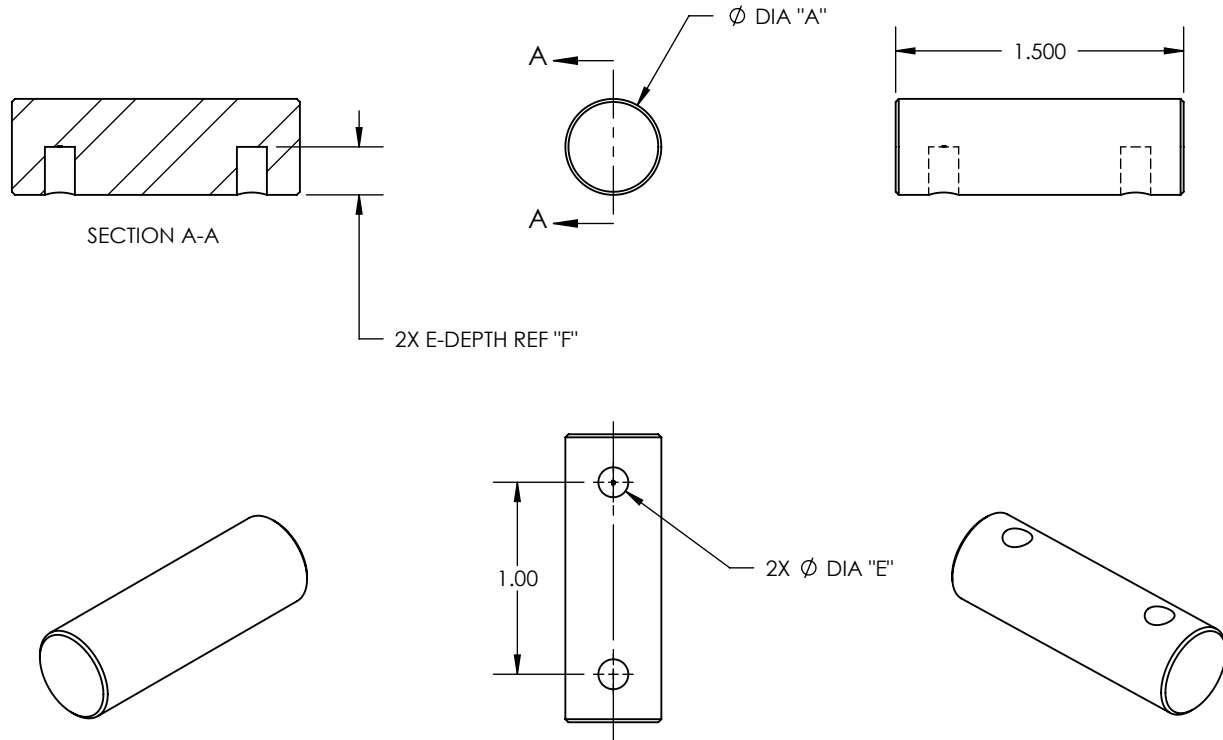


MATERIAL: STAINLESS STEEL 440C, HARDENED TO Rc 58 MIN

REV	ECO NO.	ECO TITLE	DATE
02	-----	DRAWING UPDATE	06/08/14



PART NUMBER	DIAMETER "A"	HOLE DIAMETER "E"	DEPTH REF "F"
187-CBH	0.1875 ± .0001	0.062 ± .002	0.1000
250-CBH	0.250 ± .0001	0.063 ± .002	0.125
312-CBH	0.3125 ± .0001	0.0938 ± .002	0.1250
375-CBH	0.375 ± .0001	0.094 ± .002	0.1250
500-CBH	0.500 ± .0001	0.125 ± .002	0.250
750-CBH	0.750 ± .0001	0.125 ± .002	0.300
100-CBH	1.000 ± .0001	0.125 ± .002	0.300

PROPRIETARY INFORMATION

THE INFORMATION CONTAINED IN THIS DRAWING IS THE SOLE PROPERTY OF MICRO SURFACE ENGR. INC. AND IS FURNISHED FOR INFORMATIONAL PURPOSES ONLY.

© 2006 MICRO SURFACE ENGR. INC.

UNLESS OTHERWISE SPECIFIED:

DIMENSIONS ARE IN INCHES

TOLERANCES:
ANGULAR: 1°
TWO PLACE DECIMAL ±.01
THREE PLACE DECIMAL ±.005

INTERPRET GEOMETRIC TOLERANCING PER: ANSI Y14.5



Bal-tec

1550 E. SLAUSON AVE
LOS ANGELES, CA 90011

TITLE			NUMBER		REV
CYLINDER WITH BLIND HOLE			SEE TABLE		02
ENGINEER	DWN BY	DATE DRAWN	SIZE	SCALE	PAGE
GENE GLEASON	RJV	12/02/06	A	1:1	1 OF 1