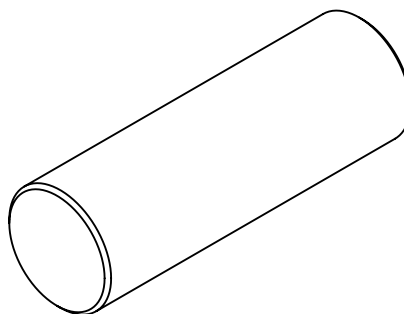
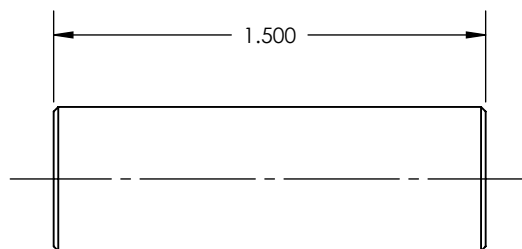
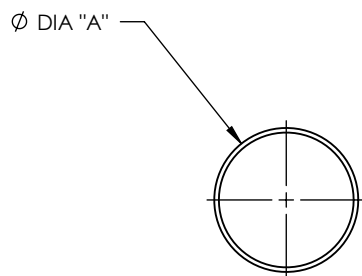



MATERIAL: STAINLESS STEEL 440C, HARDENED TO Rc 58 MIN

REV	ECO NO.	ECO TITLE	DATE
02	-----	DRAWING UPDATE	06/08/14



PART NUMBER	DIAMETER "A"
187-C	0.1875 ± .0001
250-C	0.250 ± .0001
312-C	0.3125 ± .0001
375-C	0.375 ± .0001
500-C	0.500 ± .0001
750-C	0.750 ± .0001
100-C	1.000 ± .0001

<div>PROPRIETARY INFORMATION</div> <div>THE INFORMATION CONTAINED IN THIS DRAWING IS THE SOLE PROPERTY OF MICRO SURFACE ENGR. INC. AND IS FURNISHED FOR INFORMATIONAL PURPOSES ONLY.</div> <div>© 2006 MICRO SURFACE ENGR. INC.</div>	<div>UNLESS OTHERWISE SPECIFIED:</div> <div>DIMENSIONS ARE IN INCHES</div> <div>TOLERANCES: ANGULAR: 1° TWO PLACE DECIMAL ±.01 THREE PLACE DECIMAL ±.005</div> <div>INTERPRET GEOMETRIC TOLERANCING PER: ANSI Y14.5</div>	<div></div>	<div>Bal-tec<sup>TM</sup></div> <div>1550 E. SLAUSON AVE LOS ANGELES, CA 90011</div>		
	TITLE CYLINDER		NUMBER SEE TABLE	REV 02	
	ENGINEER GENE GLEASON	DWN BY BLC	DATE DRAWN 06/08/14	SIZE A	SCALE 3:2