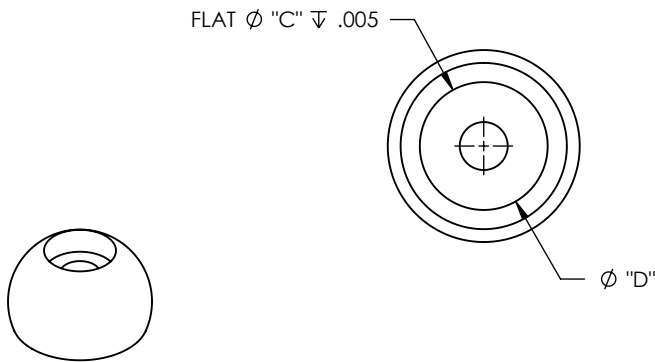
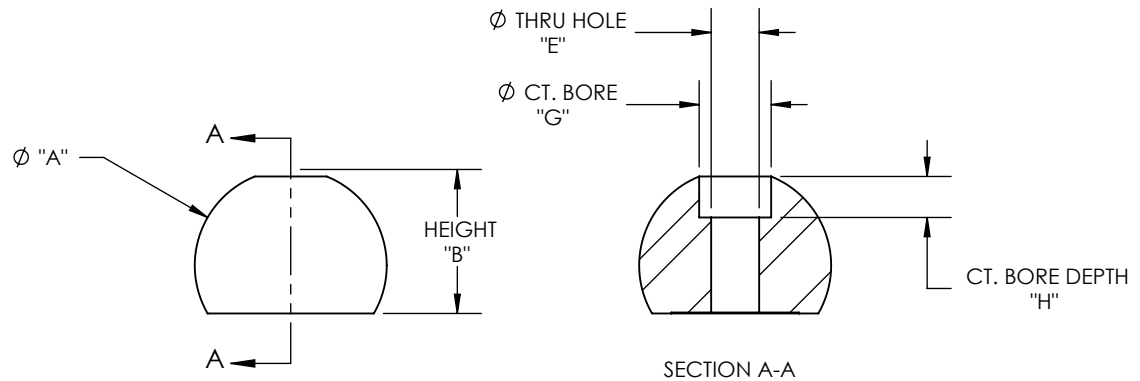


MATERIAL: STAINLESS STEEL 440C, HARDENED TO Rc 58 MIN

REV	ECO NO.	ECO TITLE	DATE
05	-----	DRAWING UPDATE	07/19/14



PART NUMBER	UNIT S	DIAMETER "A"	SPHERICITY	SURFACE ROUGHNESS MAX	FLAT DIA "C"	THRU HOLE DIA "E"	HEIGHT "B"	CT BORE DIA "G"	CT BORE DEPTH "H"
250-TBR-CB	in	0.250 ± 0.0001	0.000010	.7 Micro Inch Ra	0.175	0.096	0.167 ± 0.002	0.188	0.086
	mm	6.35 ± 0.003	0.00025		4.45	2.44	4.24 ± 0.05	4.76	2.18
312-TBR-CB	in	0.313 ± 0.0001	0.000010	.7 Micro Inch Ra	0.200	0.125	0.208 ± 0.002	0.218	0.125
	mm	7.94 ± 0.003	0.00025		5.08	3.18	5.28 ± 0.05	5.54	3.18
375-TBR-CB	in	0.375 ± 0.0001	0.000010	.7 Micro Inch Ra	0.250	0.125	0.250 ± 0.002	0.218	0.125
	mm	9.53 ± 0.003	0.00025		6.35	3.18	6.35 ± 0.05	5.54	3.18
500-TBR-CB	in	0.500 ± 0.0001	0.000010	.7 Micro Inch Ra	0.325	0.154	0.334 ± 0.002	0.281	0.138
	mm	12.70 ± 0.003	0.00025		8.26	3.91	8.48 ± 0.05	7.14	3.51
750-TBR-CB	in	0.750 ± 0.0001	0.000010	.7 Micro Inch Ra	0.500	0.206	0.500 ± 0.002	0.375	0.19
	mm	19.05 ± 0.003	0.00025		12.70	5.23	12.70 ± 0.05	9.53	4.83
100-TBR-CB	in	1.000 ± 0.0001	0.000010	.7 Micro Inch Ra	0.666	0.25	0.750 ± 0.002	0.375	0.25
	mm	25.40 ± 0.003	0.00025		16.92	6.35	19.05 ± 0.05	9.53	6.35

PROPRIETARY INFORMATION

THE INFORMATION CONTAINED IN THIS DRAWING IS THE SOLE PROPERTY OF MICRO SURFACE ENGR. INC. AND IS FURNISHED FOR INFORMATIONAL PURPOSES ONLY.

© 2006 MICRO SURFACE ENGR. INC.

UNLESS OTHERWISE SPECIFIED:

DIMENSIONS ARE IN INCHES

TOLERANCES:
ANGULAR: 1°
TWO PLACE DECIMAL ±.01
THREE PLACE DECIMAL ±.005

INTERPRET GEOMETRIC TOLERANCING PER: ANSI Y14.5



Bal-tec

1550 E. SLAUSON AVE
LOS ANGELES, CA 90011

TITLE				NUMBER	REV
TRUNCATED BALL W/ COUNTERBORED HOLE				SEE TABLE	05
ENGINEER	DWN BY	DATE DRAWN	SIZE	SCALE	PAGE
GENE GLEASON	BLC	07/19/14	A	1:1	1 OF 1