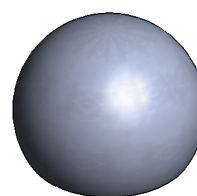
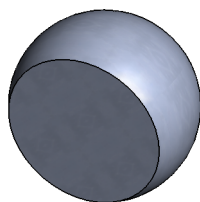
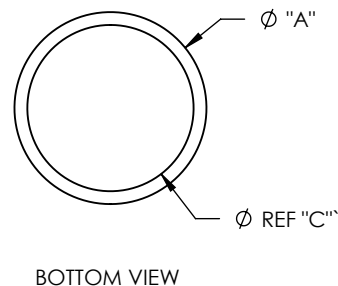
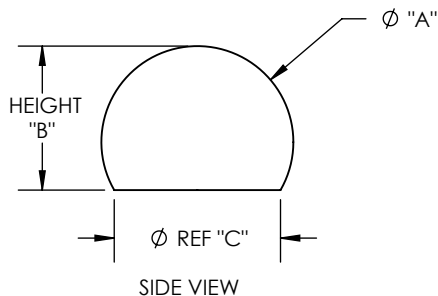


MATERIAL: STAINLESS STEEL 440C, HARDENED TO Rc 58 MIN

REV	ECO NO.	ECO TITLE	DATE
02	-----	DRAWING UPDATE	12/02/06
03	-----	ADDED DWG VIEW AND DIA REF	07/18/14



PART NUMBER	UNITS	DIAMETER "A"	SPHERICITY	SURFACE ROUGHNESS MAX	HEIGHT "B"	DIAMETER REFERENCE "C"
187-TB	in	0.1875 ± 0.0001	0.000010	.7 Micro Inch Ra	0.125 ± 0.002	0.1767
	mm	4.76 ± 0.003	0.00025		3.18 ± 0.05	4.488
250-TB	in	0.2500 ± 0.0001	0.000010	.7 Micro Inch Ra	0.167 ± 0.002	0.235
	mm	6.35 ± 0.003	0.00025		4.24 ± 0.05	5.97
312-TB	in	0.3125 ± 0.0001	0.000010	.7 Micro Inch Ra	0.208 ± 0.002	0.294
	mm	7.94 ± 0.003	0.00025		5.28 ± 0.05	7.468
375-TB	in	0.3750 ± 0.0001	0.000010	.7 Micro Inch Ra	0.250 ± 0.002	0.353
	mm	9.53 ± 0.003	0.00025		6.35 ± 0.05	8.966
500-TB	in	0.5000 ± 0.0001	0.000010	.7 Micro Inch Ra	0.334 ± 0.002	0.471
	mm	12.70 ± 0.003	0.00025		8.48 ± 0.05	11.963
750-TB	in	0.7500 ± 0.0001	0.000010	.7 Micro Inch Ra	0.500 ± 0.002	0.707
	mm	19.05 ± 0.003	0.00025		12.70 ± 0.05	17.958
100-TB	in	1.0000 ± 0.0001	0.000010	.7 Micro Inch Ra	0.750 ± 0.002	0.866
	mm	25.40 ± 0.003	0.00025		19.05 ± 0.05	21.1

**PROPRIETARY INFORMATION**

THE INFORMATION CONTAINED IN THIS DRAWING IS THE SOLE PROPERTY OF MICRO SURFACE ENGR. INC. AND IS FURNISHED FOR INFORMATIONAL PURPOSES ONLY.

© 2006 MICRO SURFACE ENGR. INC.

UNLESS OTHERWISE SPECIFIED:

DIMENSIONS ARE IN INCHES

TOLERANCES:  
ANGULAR: 1°  
TWO PLACE DECIMAL ±.01  
THREE PLACE DECIMAL ±.005

INTERPRET GEOMETRIC TOLERANCING PER: ANSI Y14.5



**Bal-tec**<sup>TM</sup>

1550 E. SLAUSON AVE  
LOS ANGELES, CA 90011

TITLE TRUNCATED BALL				NUMBER SEE TABLE		REV 03
ENGINEER GENE GLEASON	DWN BY BLC	DATE DRAWN 07/18/14	SIZE A	SCALE 1:1	PAGE 1 OF 1	