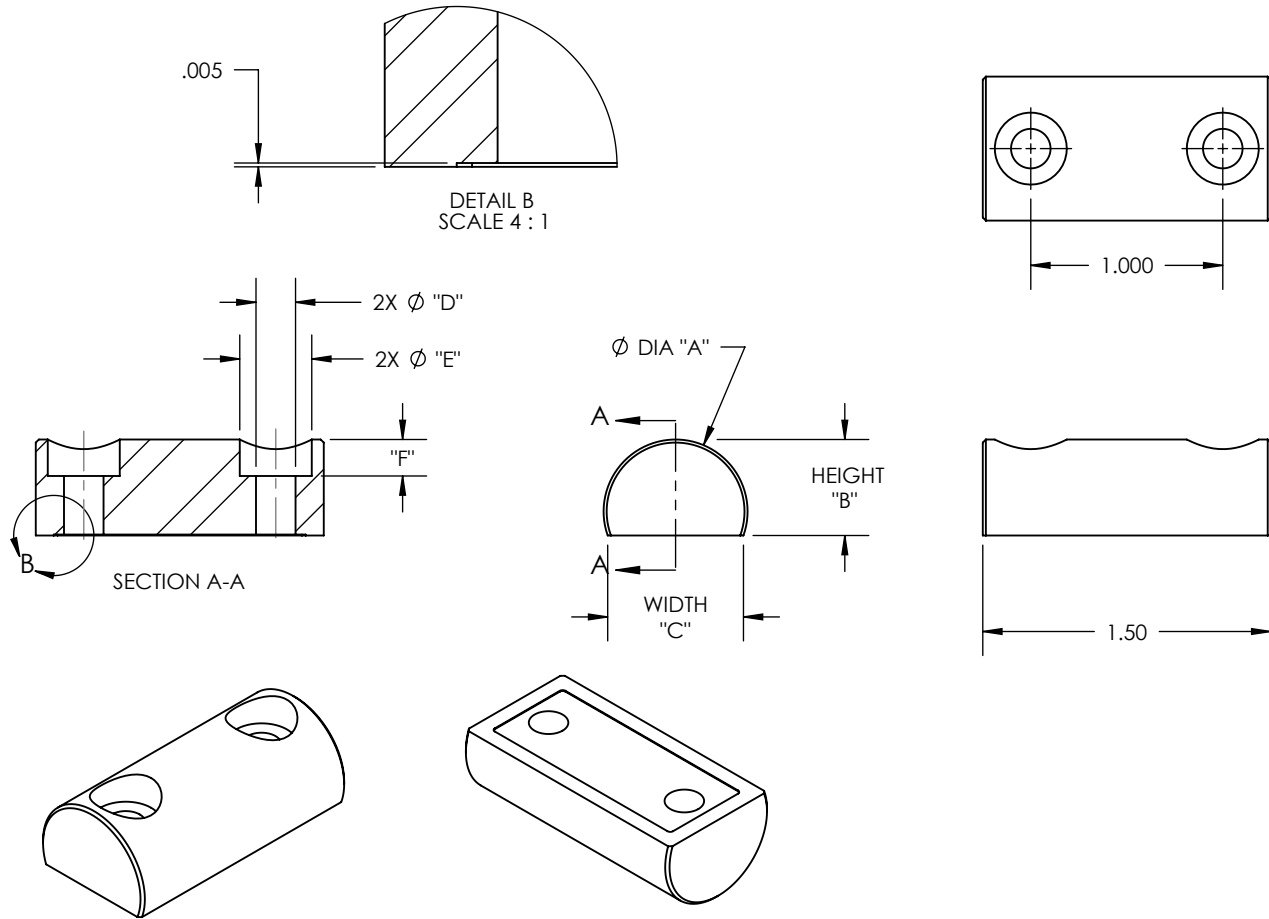



MATERIAL: STAINLESS STEEL 440C, HARDENED TO Rc 58 MIN

REV	ECO NO.	ECO TITLE	DATE
03	-----	DRAWING UPDATE	07/05/14



PART NUMBER	UNITS	DIAMETER "A"	HEIGHT "B"	WIDTH "C"	THRU HOLE DIA "E"	CT BORE DIA "G"	CT BORE DEPTH "H"
250-TCR-CB	in	0.250 ± .0001	0.167 ± .002	0.235	0.094	0.1875	0.086
	mm	6.350 ± .003	4.242 ± .05	5.970	2.288	4.75	2.184
312-TCR-CB	in	0.3125 ± .0001	0.208 ± .002	0.294	0.125	0.218	0.125
	mm	7.9375 ± .003	5.283 ± .05	7.468	3.175	5.537	3.175
375-TCR-CB	in	0.375 ± .0001	0.250 ± .002	0.353	0.125	0.218	0.125
	mm	9.525 ± .003	6.350 ± .05	8.966	3.175	5.537	3.175
500-TCR-CB	in	0.500 ± .0001	0.334 ± .002	0.471	0.154	0.281	0.138
	mm	12.700 ± .003	8.484 ± .05	11.963	3.910	7.0137	3.505
750-TCR-CB	in	0.750 ± .0001	0.500 ± .002	0.707	0.206	0.375	0.190
	mm	19.050 ± .003	12.700 ± .05	17.958	5.323	9.52	4.826
100-TCR-CB	in	1.000 ± .0001	0.750 ± .002	0.866	0.206	0.375	0.250
	mm	25.400 ± .003	19.050 ± .05	21.100	6.350	9.52	6.350

<div>PROPRIETARY INFORMATION</div> <div>THE INFORMATION CONTAINED IN THIS DRAWING IS THE SOLE PROPERTY OF MICRO SURFACE ENGR. INC. AND IS FURNISHED FOR INFORMATIONAL PURPOSES ONLY.</div> <div>© 2006 MICRO SURFACE ENGR. INC.</div>	UNLESS OTHERWISE SPECIFIED:		<div>Bal-tecTM</div> <div>1550 E. SLAUSON AVE</div> <div>LOS ANGELES, CA 90011</div>					
	DIMENSIONS ARE IN INCHES		TITLE				NUMBER	REV
	TOLERANCES: ANGULAR: 1° TWO PLACE DECIMAL ±.01 THREE PLACE DECIMAL ±.005		TRUNCATED CYLINDER WITH CTBORED HOLE				SEE TABLE	03
	INTERPRET GEOMETRIC TOLERANCING PER: ANSI Y14.5		ENGINEER	DWN BY	DATE DRAWN	SIZE	SCALE	PAGE
		GENE GLEASON	BLC	07/05/14	A	1:1	1 OF 1	