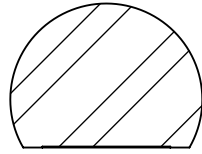
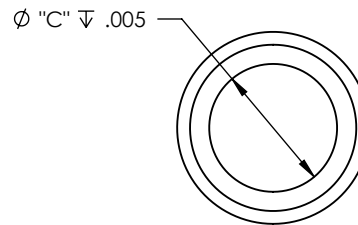
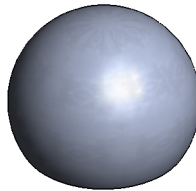
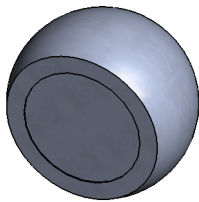
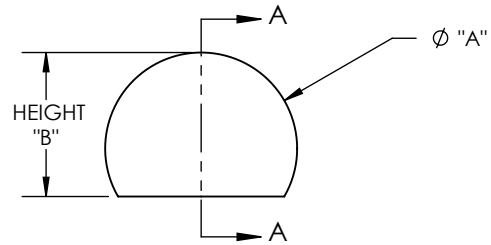


MATERIAL: STAINLESS STEEL 440C, HARDENED TO Rc 58 MIN

REV	ECO NO.	ECO TITLE	DATE
02	-----	DRAWING UPDATE	07/19/14



SECTION A-A



PART NUMBER	UNITS	DIAMETER "A"	SPHERICITY	SURFACE ROUGHNESS MAX	HEIGHT "B"	RECESS DIA "C"
187-TBR	in	0.1875 ± 0.0001	0.000010	.7 Micro Inch Ra	0.125 ± 0.002	0.125
	mm	4.76 ± 0.003	0.00025		3.18 ± 0.05	3.17
250-TBR	in	0.2500 ± 0.0001	0.000010	.7 Micro Inch Ra	0.167 ± 0.002	0.175
	mm	6.35 ± 0.003	0.00025		4.24 ± 0.05	4.45
312-TBR	in	0.3125 ± 0.0001	0.000010	.7 Micro Inch Ra	0.208 ± 0.002	0.200
	mm	7.94 ± 0.003	0.00025		5.28 ± 0.05	5.08
375-TBR	in	0.3750 ± 0.0001	0.000010	.7 Micro Inch Ra	0.250 ± 0.002	0.250
	mm	9.53 ± 0.003	0.00025		6.35 ± 0.05	6.35
500-TBR	in	0.5000 ± 0.0001	0.000010	.7 Micro Inch Ra	0.334 ± 0.002	0.325
	mm	12.70 ± 0.003	0.00025		8.48 ± 0.05	8.26
750-TBR	in	0.7500 ± 0.0001	0.000010	.7 Micro Inch Ra	0.500 ± 0.002	0.500
	mm	19.05 ± 0.003	0.00025		12.70 ± 0.05	12.70
100-TBR	in	1.0000 ± 0.0001	0.000010	.7 Micro Inch Ra	0.750 ± 0.002	0.666
	mm	25.40 ± 0.003	0.00025		19.05 ± 0.05	16.92

PROPRIETARY INFORMATION

THE INFORMATION CONTAINED IN THIS DRAWING IS THE SOLE PROPERTY OF MICRO SURFACE ENGR. INC. AND IS FURNISHED FOR INFORMATIONAL PURPOSES ONLY.

© 2006 MICRO SURFACE ENGR. INC.

UNLESS OTHERWISE SPECIFIED:

DIMENSIONS ARE IN INCHES

TOLERANCES:
ANGULAR: 1°
TWO PLACE DECIMAL ±.01
THREE PLACE DECIMAL ±.005

INTERPRET GEOMETRIC TOLERANCING PER: ANSI Y14.5



Bal-tec

1550 E. SLAUSON AVE
LOS ANGELES, CA 90011

TITLE			NUMBER		REV
TRUNCATED AND RECESSED BALL			SEE TABLE		02
ENGINEER	DWN BY	DATE DRAWN	SIZE	SCALE	PAGE
GENE GLEASON	BLC	07/19/14	A	1:1	1 OF 1