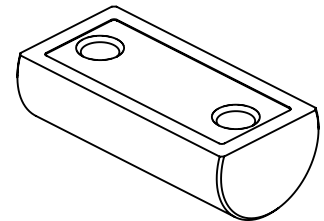
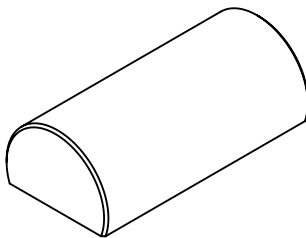
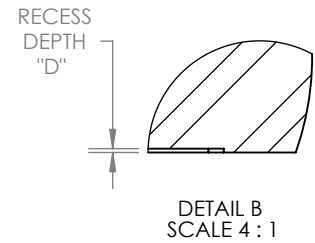
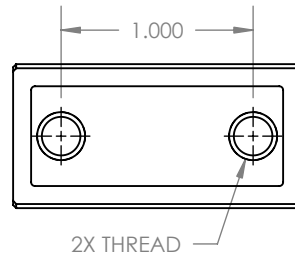
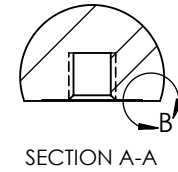
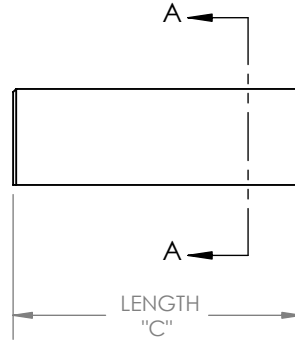
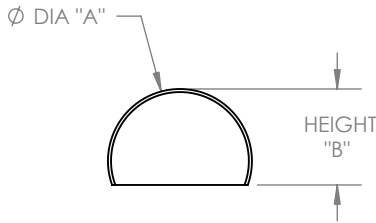


MATERIAL: STAINLESS STEEL 440C, HARDENED TO Rc 58 MIN

REV	ECO NO.	ECO TITLE	DATE
---	-----	-----	--/--/--



PART NUMBER	UNITS	DIAMETER "A"	HEIGHT "B"	LENGTH "C"	RECESS DEPTH "D"	THREAD	MIN THREAD DEPTH
250-TCR-T	in	0.2500 \pm 0.0001	0.167 \pm 0.002	1.500	0.005	#6-32	0.125
	mm	6.35 \pm 0.003	4.24 \pm 0.05	38.10	0.13		3.18
312-TCR-T	in	0.3125 \pm 0.0001	0.208 \pm 0.002	1.500	0.005	#6-32	0.154
	mm	7.94 \pm 0.003	5.28 \pm 0.05	38.10	0.13		3.91
375-TCR-T	in	0.3750 \pm 0.0001	0.250 \pm 0.002	1.500	0.005	#10-32	0.200
	mm	9.53 \pm 0.003	6.35 \pm 0.05	38.10	0.13		5.08
500-TCR-T	in	0.5000 \pm 0.0001	0.334 \pm 0.002	1.500	0.005	1/4-20	0.250
	mm	12.70 \pm 0.003	8.48 \pm 0.05	38.10	0.13		6.35
750-TCR-T	in	0.7500 \pm 0.0001	0.500 \pm 0.002	1.500	0.005	1/4-20	0.250
	mm	19.05 \pm 0.003	12.70 \pm 0.05	38.10	0.13		6.35
100-TCR-T	in	1.0000 \pm 0.0001	0.750 \pm 0.002	1.500	0.005	1/4-20	0.250
	mm	25.40 \pm 0.003	19.05 \pm 0.05	38.10	0.13		6.35

PROPRIETARY INFORMATION

THE INFORMATION CONTAINED IN THIS DRAWING IS THE SOLE PROPERTY OF MICRO SURFACE ENGR. INC. AND IS FURNISHED FOR INFORMATIONAL PURPOSES ONLY.

© 2006 MICRO SURFACE ENGR. INC.

UNLESS OTHERWISE SPECIFIED:

DIMENSIONS ARE IN INCHES

TOLERANCES:
ANGULAR: 1°
TWO PLACE DECIMAL \pm 0.01
THREE PLACE DECIMAL \pm 0.005

INTERPRET GEOMETRIC TOLERANCING PER: ANSI Y14.5



Bal-tec

1550 E. SLAUSON AVE
LOS ANGELES, CA 90011

TITLE			NUMBER	REV
TRUNCATED & THREADED CYLINDER			SEE TABLE	02
ENGINEER	DWN BY	DATE DRAWN	SIZE	SCALE
GENE GLEASON	RJV	12/02/06	A	1:1
			PAGE	1 OF 1