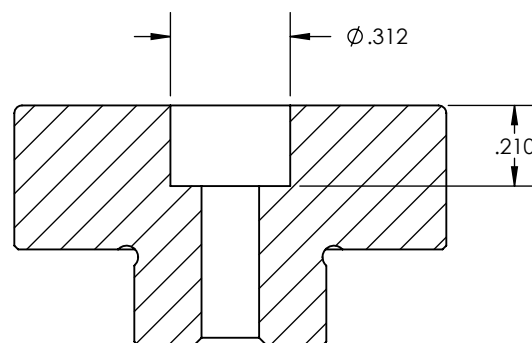
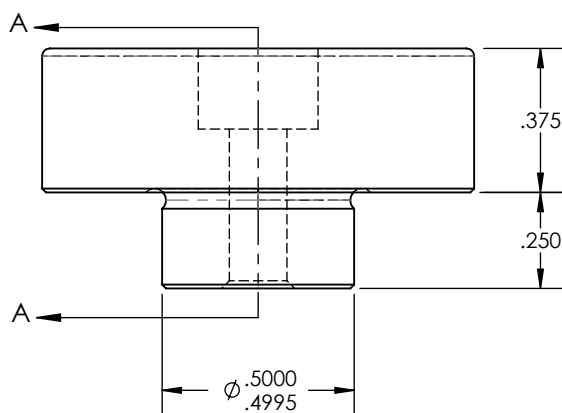
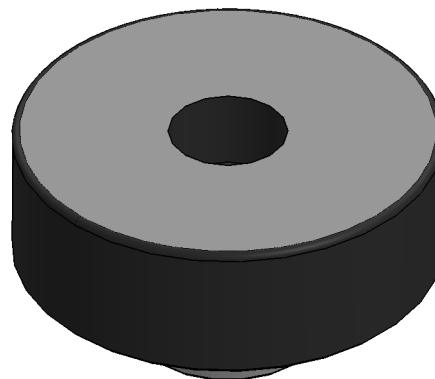
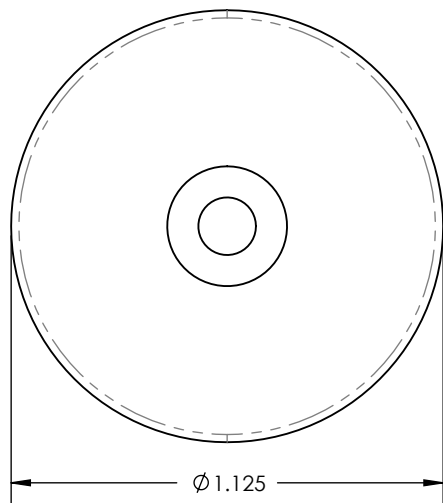
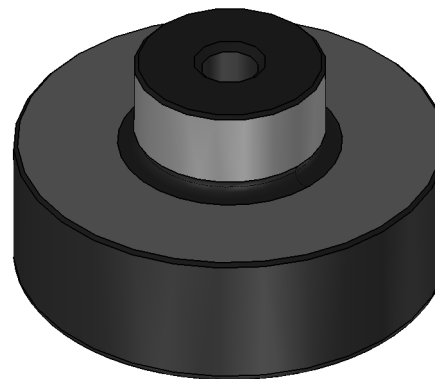
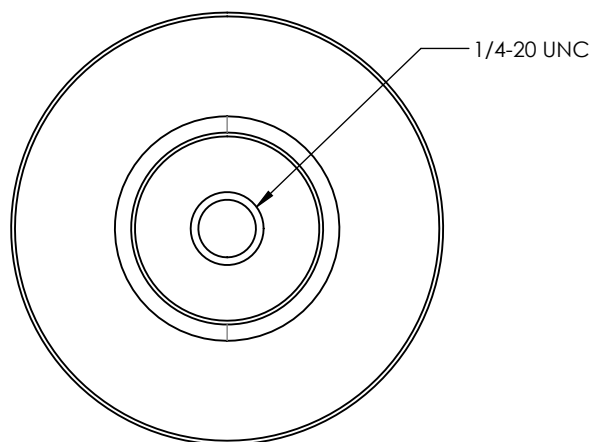



REV	ECO NO.	ECO TITLE	DATE
01	-----	DRAWING UPDATE	05/16/14



SECTION A-A



<div>PROPRIETARY INFORMATION</div> <div>THE INFORMATION CONTAINED IN THIS DRAWING IS THE SOLE PROPERTY OF MICRO SURFACE ENGR. INC. AND IS FURNISHED FOR INFORMATIONAL PURPOSES ONLY.</div> <div>© 2006 MICRO SURFACE ENGR. INC.</div>	UNLESS OTHERWISE SPECIFIED:		<div>Bal-tecTM</div> <div>1550 E. SLAUSON AVE</div> <div>LOS ANGELES, CA 90011</div>				
	DIMENSIONS ARE IN INCHES						
	TOLERANCES: ANGULAR: 1° TWO PLACE DECIMAL ±.01 THREE PLACE DECIMAL ±.005	TITLE FLAT - CYLINDRICAL POST MOUNTED WITH COUNTERBORE		NUMBER F-112-CB-CPM		REV 01	
	INTERPRET GEOMETRIC TOLERANCING PER: ANSI Y14.5	ENGINEER GENE GLEASON	DWN BY BLC	DATE DRAWN 05/16/14	SIZE A	SCALE 2:1	PAGE 1 OF 1